

THE PROGRAM

Spring/Summer 2019



IN THIS ISSUE:

6 months packed with art and inspiration

50+ exhibitions and events

Creative fun for all ages

GRAFTON REGIONAL GALLERY

The Grafton Regional Gallery is situated in the heritage precinct of Grafton and is a cultural hub for the Clarence Valley, established in 1988 with a donation from the Jacaranda Art Society, the Gallery collection holds over 3,000 works including significant representations of artwork by Doris and Gladys O'Grady, John William Lindt, Ken Done and works that celebrate the Clarence Valley region. Ongoing programs include the Jacaranda Acquisitive Drawing Award (JADA) and Clarence Valley Indigenous Art Award (CVIAA) which provide a focus on excellence in contemporary drawing and local indigenous stories.

GRAFTON REGIONAL GALLERY

158 Fitzroy Street,
GRAFTON NSW 2460
02 6642 3177

Locked Bag 23,
GRAFTON NSW 2460

www.graftongallery.nsw.gov.au



GALLERY EXPANSION

In late 2019 the Gallery will enter a new era of development with major renovations taking place funded by the NSW State Government through the Regional Cultural Fund. This exciting development will see a bigger, brighter gallery open in late 2020. To keep up to date with progress on this exciting project visit Clarence Conversations. We will be posting regular updates and snap shots as the building progresses and are looking forward to taking you with us on this thrilling journey.

www.clarenceconversations.com.au

FROM THE GALLERY DIRECTOR

As we head towards the warmer months Grafton Regional Gallery will inspire you through art and creativity. The second half of 2019 brings a wonderful array of exciting exhibitions and creative events for all ages, with highlights including; *The Way of the Reformer*, *Moving Histories // Future Projections*, *Men of Yulgilbar*, *MICROCOSM*, and *A world in a looking glass*.



The creative talents of our region are celebrated with inspiring exhibitions including *On any Wednesday* featuring recent *plein air* work by Jenni Peardon and Stacey Conridge, *Chalk the Line*, featuring wall drawings by young artists of the Clarence and new work in the *Summer Sensations* exhibition.

The Gallery continues to be a hub of creativity with workshops and events for all ages. Check our website and Facebook page for links to tickets and bookings through Eventbrite. To keep informed of upcoming events and exhibitions subscribe to our regular newsletters via the links on our website.

I hope to see you at the Gallery soon.

Niomi Sands

Cover: Goldberg Aberline Studio, *MICROCOSM*, 2018, mixed media. Courtesy of the artist.

ON VIEW

18 July -
1 September



IT WAS TIME: ARTWORK FROM THE 60s AND 70s

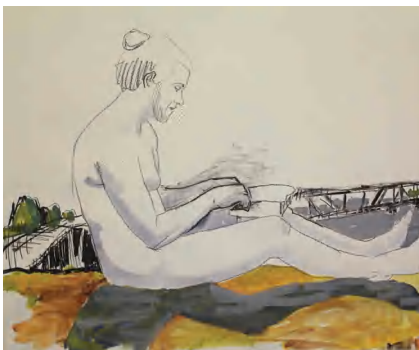
Hidden gems from the Gallery Collection will be uncovered for a special celebration of artworks created in the Whitlam era, including works by John Firth-Smith, Guy Warren, Elisabeth Cummings and Michael John Taylor.

John Firth-Smith, *Wollombi*, 1972, oil on canvas. Grafton Regional Gallery gift of Jacaranda Art Society 1988.

MOVING IMAGE: FROM THE COLLECTION

This exhibition explores drawing through moving images and includes artwork by prominent Australian artists including the 2018 JADA winner Todd Fuller.

Todd Fuller, *Ode to Clarence*, 2017, mixed media animation on paper. Grafton Regional Gallery, winner of 2018 JADA.





ON VIEW

18 July -
1 September

THE WAY OF THE REFORMER | GOUGH WHITLAM IN HIS CENTURY

From a childhood in fledgling Canberra to spag bol in the suburbs – curated in 2014 to celebrate the centenary of Gough's birth this exhibition takes an entirely different lens to the man that would become a national icon. Visit this exhibition and celebrate Gough's life – not just his life as Prime Minister, but his life as an Australian.

A touring exhibition of The Whitlam Institute within Western Sydney University.

Whitlam Institute
WITHIN WESTERN SYDNEY UNIVERSITY

WESTERN SYDNEY
UNIVERSITY



Pilot Officer Edward Gough Whitlam on 4 March 1943.
Whitlam Prime Ministerial Collection 16008



ON VIEW

5 September
- 30 October

MOVING HISTORIES // *FUTURE PROJECTIONS*

Moving Histories // Future Projections brings together some of Australia's leading female contemporary artists working across screen based media including, Mikala Dwyer and Justene Williams, Amala Groom, Deborah Kelly, Kate Blackmore and Jacinta Tobin, Joan Ross, Soda_Jerk, Angelica Mesiti and Caroline Garcia. Curated by Kelly Doley and Diana Baker-Smith of collaborative artist group Barbara Cleveland (formerly Brown Council).

A dLux MediaArts exhibition toured by Museums & Galleries of NSW.

CURATORS TALK

Saturday 7 September, 3pm



ON VIEW

5 September
– 30 October

A WORLD IN A LOOKING GLASS:

The magic and mystery of the everyday is captured in this enchanting exhibition of recent small scale works by Kendal Murray, Mylyn Nguyen, Leo Robba, Waratah Lahy and Tinky. Each artist draws our focus through the miniature and captures our attention, to find the extraordinary and, delight in the unremarkable.



Tinky. *Henry and Tom wished the local cafes would take smashed eggs off the breakfast menu. Fingers crossed they'd be laid off*, 2018, mixed media. Image courtesy of the artist.

ON VIEW

**5 September
- 30 October**



ON ANY WEDNESDAY:

This exhibition presents the fruit of regular 'Wednesday' plein air sessions over several years by Clarence Valley artists Jenni Peardon and Stacey Conridge. With each location offering its challenges, the practice of painting en plein air also provides time for the artists to be present in nature, satisfying that deeper human instinct to connect and notice aspects of the environment otherwise overlooked.

Stacey Conridge, *Redhill Woodford Island*, 2017/18, oil on traditional gesso board, 14 x 26cm. Courtesy of the artist.

**EXHIBITIONS
OFFICIAL OPENING**

**Saturday
7 September,
3:30pm**

**MOVING
HISTORIES
CURATORS TALK**

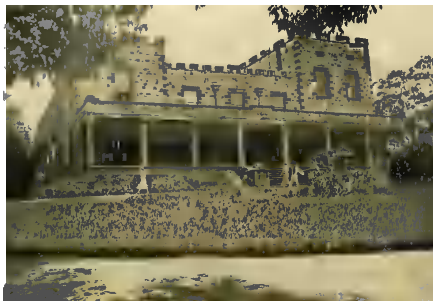
**Saturday
7 September,
3pm (prior to
opening)**

**PEARDON /
CONRIDGE
ARTIST TALK**

**Saturday
5 October,
11am**

ON VIEW

**5 September
– 30 October**



MEN OF YULGILBAR:

Following the successful *Women of Yulgilbar* exhibition in March 2017, this exhibition features some of the many men whose hard work and leadership skills ensured that Yulgilbar remains a successful and much-loved historic rural property in the Clarence Valley.

Yulgilbar Castle circa 1900.
Courtesy Clarence River Historical Society.

MICROCOSM:

An 'explosion of happiness' will be unveiled at the Gallery this October. *Microcosm* is an inflatable art installation by artists Matthew Aberline and Maurice Goldberg from the Goldberg Aberline Studio (GAS). Originally featured in Sydney's famous "Sculpture by the Sea" where it was installed on the Surf Life Saver Building at Tamarama Beach, we are proud to present this at Grafton Regional Gallery.

MICROCOSM, Goldberg Aberline Studio, 2018, mixed media. Courtesy of the artist.



ON VIEW

**5 September
- 30 October**



CHALK THE LINE:

Inspired by the words of the late Johnny Cash and the history of chalk lines, this exhibition features wall drawing and recent work by Clarence Valley artists. The chalk line has assisted builders in various cultures since the times of ancient Egypt. Each artist brings their own take on the humble line in this vibrant transformation of the Main Gallery.

Come along and be an artist in the Chalk The Line interactive space, where you can add and create your own chalk wall drawing.

Local Artist Jaz Grady.

MEN OF YULGILBAR DEVONSHIRE TEA / OPENING

Friday 25 October, 11am - 1pm

ART PARTY & EXHIBITIONS OPENING

Thursday 24 October, 6pm - 9pm

ON VIEW

**12 December
– 2 February**

SUMMER *Sensations*

Celebrating the artists of the Clarence Valley and their wonderful creative contribution to the cultural vibrancy of the area. This exhibition showcases art work across all mediums.

Proudly brought to you by The Gallery Foundation and Bendigo Bank South Grafton.

OFFICIAL OPENING

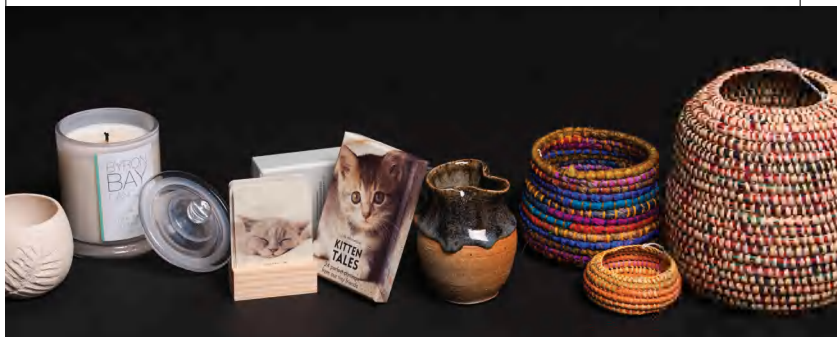
Friday 13 December, 6pm

Summer Sensations Christmas party



South Grafton
Community Bank® Branch





GALLERY SHOP

**Are you looking for the
perfect gift for your
special someone?**

The gallery shop stocks a boutique range of jewellery, unique and quirky contemporary design ware, 'Elk' jewellery and leather ware and a range of handcrafted items by local artists. New stock arriving regularly.



OPPORTUNITIES FOR ARTISTS

ARTISTS UNPACKED

- TAKE YOUR ART PRACTICE
TO THE NEXT LEVEL!

Artists Unpacked is a series of practical workshops designed to develop your art and business skills. Keep up to date with workshop details by following the Grafton Regional Gallery Facebook page, Instagram or subscribe to our newsletter by emailing gALLERY@clarence.nsw.gov.au



VISION & MISSION CLARITY FOR CREATIVES

Thursday 29 August

This workshop is perfect for gaining the clarity needed to get your dream life on track. Learn how to focus in on the things that matter most to you to spark creativity and inspiration. Christina Giorgio from Creative Consultancies will help you develop practical skills to get your Creative Vision and Mission in focus, and put you on your pathway to success. Presented by Arts Northern Rivers.

Book via the links on Eventbrite and the Gallery Facebook page.

Do you have a new skill or a creative/artist you would like learn from? The Gallery is keen to hear your suggestions for workshops for the 2020 plunge Arts & Culture Festival. Email the Clarence Valley Cultural Committee at culture@clarence.nsw.gov.au.

ARTISTS NETWORKING EVENING

Wednesday 27 November

Join local artists and the Clarence Valley Cultural Committee for an end of year glass of bubbly. Peter Wood, Executive Director Arts Northern Rivers will present highlights from the recent Artstate conference in Tamworth. Artstate features an exciting program of theatre, music, dance, film and visual arts celebrating the vitality and creativity of NSW regional artists.



Did you know the Gallery provides a bursary for Clarence Valley artists to attend a Crafton Regional Gallery workshop at no charge? Exhibition and Bursary application forms can be found on the gallery website.



ART RESIDENCIES

The Artist in Residence program is aimed at emerging and established artists who are developing a career in the arts. The gallery aims to provide a supportive environment for artists and curators to pursue their practice and the residency fosters research, new work and collaborations.

Supported with funding from Create NSW.

**Catherine
O'Donnell
ARTIST IN
RESIDENCE
July 2019**

For Artist in Residence opportunities in 2020 check the Gallery website or for information on residency applications email **gallery@clarence.nsw.gov.au**



YULGILBAR

YULGILBAR FELLOWSHIP

Do you have a great idea that will take your arts practice to the next level? The Gallery is seeking applications from Clarence Valley artists for Yulgilbar Fellowships on offer in 2020. The Gallery and the Yulgilbar Foundation will provide assistance for two artists to develop their arts practice within Australia and abroad. The Fellowships will provide assistance towards travel to undertake study, residency, mentorship or a research project.

Visit the [Gallery website](#) for more information.

SUMMER *Sensations*

EXHIBITIONS
CALL OUT FOR
ARTWORKS

SUMMER SENSATIONS LOCAL ARTISTS EXHIBITION

Crafton Regional Gallery is developing the exhibition *Summer Sensations* to celebrate the vibrant artists of the Clarence Valley and their wonderful creative contribution to the cultural vibrancy of the area. The Gallery is seeking expressions of interest from artists who work across all mediums and subjects. You are invited to submit one small artwork to be included in the exhibition, which will be held at the gallery from **12 December 2019 - 2 February 2020**. To be part of this opportunity visit the Gallery website and submit your form and artwork between 2nd and 4th December. Contact the Gallery for more information.

OPPORTUNITIES FOR ARTISTS

WORKSHOPS AND MASTER CLASSES

Unlock your creativity at one of the Gallery's workshops or master classes. Throughout the year the Gallery will be bringing renowned artists and artisans to the Clarence Valley to share their creative skills. These workshops are aimed at all levels and are a great way to build on your current practice or to start your creative journey.

MUSEUMS UNPACKED

Are you a collector? Do you want to know how to care for your collections? This series of workshops is for you! These hands-on workshops are for people interested in history and preserving memorabilia. **Find out more on the Gallery website or Facebook page.**

ART AND IDEAS

A series of curator and artist talks inspired by the exhibitions on display in the Gallery. This program is a great way to discover behind the scenes stories about our current exhibitions and find out more about new the artists work. Check out the Gallery website to keep up to date.

ART AFTER DARK

Creative classes for adults held mid week each school term. Usually a 3 week course, Art After Dark is a chance to make something fabulous and catch up with friends over wine and cheese.

EDUCATION AND SCHOOL HOLIDAYS

WORKSHOPS & TOURS

Be creative with us! The Gallery offers creative artmaking workshops and interactive exhibition tours for schools and community groups. These workshops and tours can be tailored to your students, curriculum based on, or inspired by current exhibitions.



GALLERY OUT & ABOUT

Host the Gallery at your place! The Gallery Out & About program brings artworks from the Gallery's collection to life in your classroom. Students learn about different artworks through this program in a creative way. This hands-on presentation inspires students to develop an understanding of different artforms, creative techniques and expression.



LITTLE SmARTies

**Tuesdays 6 August, 1 October,
3 December, 10:30am - 12:00pm**

The Little SmARTies program is jam-packed with fun interactive activities for young children. Enjoy sing-alongs and dancing with a musician from the Clarence Valley Conservatorium and craft activities as well as a lively tour through an exhibition with a local educator.

Cost: \$5 per child. Babies free. Family ticket \$8 for 2 or more children. All art materials and equipment included.

This program is in partnership with the Clarence Valley Conservatorium and Create NSW.

TERM 3

ART AFTER SCHOOL

Learn, create and make! Art After School is a term based workshop series tailored to inspire school aged children to learn new creative skills through hands on artmaking.

CLAY CASTLES with Cassandra-Lyn Palmer

Tuesdays 30 July –
17 September (8 weeks),
4:00pm – 5:30pm
\$130 per student

9 years
& over

MAGICAL MANDALAS
with Lorina Dufty
Wednesday 31 July –
18 September (8 weeks),
4:00 – 5:30pm
\$130 per student

CLAY PLAY
with Cassandra-Lyn Palmer
Thursdays 15, 22 & 29 August
(3 weeks),
4:00pm – 5:00pm
\$60 per student

4 – 9
years

Visit the Gallery website
for more information on
all of our workshops.



SCHOOL HOLIDAY WORKSHOPS

During school holidays the Gallery presents a series of fun and creative workshops to inspire your budding artists! Check out the Gallery website for details.

OCTOBER HOLIDAY WORKSHOPS

Tuesday 1 October –
Friday 4 October

JANUARY 2020 HOLIDAY WORKSHOPS

Tuesday 21 January –
Friday 24 January



The Gallery accepts
vouchers from the Creative
Kids program for all Art
After School workshops.

South Grafton
Community Bank® Branch



Bendigo Bank, in partnership with The Gallery Foundation, proudly supports arts and food culture in the Clarence Valley.

Coming soon...

The Gallery Foundation presents

The Bendigo Bank Gate to Plate

Sunday 29th September

The Barn, Grafton Showground



62 Skinner Street, South Grafton. Ph: 6643 3044

DATES FOR YOUR DIARY

GALLERY FOUNDATION LUNCH

Sunday 8 September

Lunch in the courtyard with the 1919 Melbourne Cup. Join The Gallery Foundation and Clarence River Jockey Club for an exclusive viewing of the 1919 Melbourne Cup won by Artilleryman with jockey Robert Lewis.



BENDIGO BANK GATE TO PLATE: LONG LUNCH AND GROWERS MARKET

29 September

The Clarence Valley region has an impressive range of produce. Gate to Plate is a flagship food event showcasing everything the Clarence Valley and River has to offer from organic beef and pork to wild caught seafood, many varieties of fruit and vegetables, macadamias, heritage tomatoes and blueberries.



More information on these events can be found on their website: thegalleryfoundation.com.au

VENICE SLIDE NIGHT

Thursday 14 November

Take a trip around the 2019 Venice Biennale with Grafton Regional Gallery director Niomi Sands. Niomi will share highlights from her recent trip to Venice.





FRIENDS OF GRAFTON GALLERY

AN EVENING WITH JULIE HUTCHINGS

Saturday 9 November

Come along and hear about the evolution of Julie Hutchings' *Battle Scars* project. Celebrate the end of a wonderful year before the main gallery is closed for renovations.

FOGG MORNING TEAS

August 13 and December 10

More information can be found on their website: galleryfriends.com.au



ARTS IN MIND

**18 July, 15 August,
19 September, 17 October,
21 November**

Arts in mind is a relaxed social gathering including guided tours and presentations about artworks on display for people living with dementia. Morning tea is provided. Program cost: \$5, carers free. Third Thursday of every month at the Gallery.

This program is supported by Create NSW.

NEVER MISS ANOTHER EXHIBITION OPENING



Celebrate and be one of the first to experience our new exhibitions. Openings are a great opportunity to catch up with friends, learn more about the latest exhibitions and meet artists and curators.

**Saturday 7 September,
3:30pm**

**MOVING HISTORIES,
THROUGH THE LOOKING
GLASS**

ON ANY WEDNESDAY

**Thursday 24 October,
6pm**

**ART PARTY OPENING
MICROCOSM**

CHALK THE LINE

**Friday 25 October,
11am**

**MEN OF YULGILBAR
OFFICIAL OPENING**

and Devonshire tea

**Friday 13 December,
6pm**

SUMMER SENSATIONS

featuring work from local
artists and **GALLERY
CHRISTMAS PARTY**

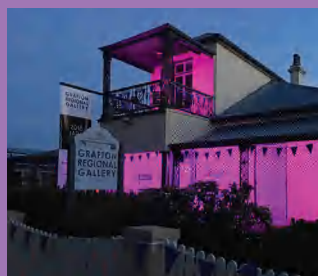
**Bookings for all events and
programs through Eventbrite**

SPECIAL EVENTS IN THE CLARENCE VALLEY

53 ISLANDS FESTIVAL

The local community will celebrate the Clarence River during the inaugural *53 Islands Festival*. Join the celebrations and be inspired by our amazing river and its islands to create your own island on the verandah during the month of October. You can also view the exhibition inspired by the Clarence River at the Grafton Library.

For more 53 Islands events visit their Facebook page [@53islands](#)





JACARANDA FESTIVAL

Celebrate Australia's oldest floral festival at the Grafton Regional Gallery

- **GET CREATIVE** with the family and make purple art and craft at our art space on the Gallery veranda
- **LIGHT UP THE GALLERY** During the Jacaranda Festival The Grafton Regional Gallery will be awash in purple
- **ART PARTY AND EXHIBITIONS OPENING** Join our local artists to celebrate new exhibitions. Everyone is welcome. Thursday night 24th October 6pm – 8pm
- **OPEN GARDEN** The beautiful cottage garden at the Gallery will be part of the Jacaranda open gardens program
- **THE BIG PURPLE CHAIR** Don't miss the chance to take your photo at the famous Grafton Chair – a sculpture by Keith Cameron and part of the Gallery collection.
- **SHARE YOUR PHOTOS** on social media
#bigpurplechairgrafton
#graftonchair
#purplethronegrafton

For more Jacaranda Festival events visit the website www.jacarandafestival.com



Top: Grafton Chair by **Keith Cameron**, courtesy Gallery Collection.

Below: The Grafton Regional Gallery lights up for the 2018 Jacaranda Festival.
Photo by **Jody Graham**

SUPPORT YOUR GALLERY

VOLUNTEER AS A GALLERY CONCIERGE

Are you a friendly person looking to support your local Gallery through donating your time regularly to greet visitors and tourists? Are you looking to meet new friends and join our team? Email: gallery@clarence.nsw.gov.au to join our wonderful volunteer team.

JOIN THE FRIENDS

Joining the Friends of Grafton Regional Gallery is a great way to meet new people, participate in the vibrant arts scene of the Clarence Valley and support the Grafton Regional Gallery. The Friends has had a long standing history of supporting visual arts in our community. Each year the Friends present an exciting program of events to fundraise for the JADA and support the Gallery through projects and sourcing equipment to enhance the Gallery program. For more information visit galleryfriends.com.au or drop by the Gallery to collect a membership form

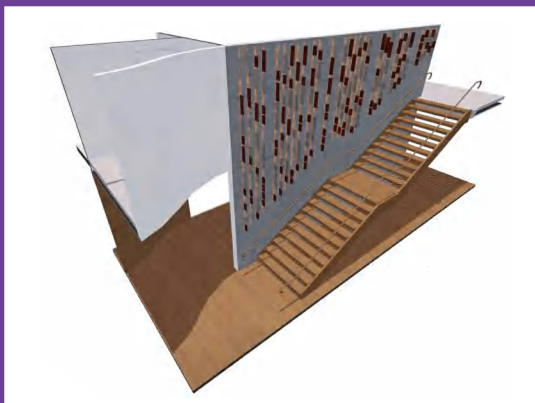
GIVING TO GALLERY FOUNDATION

The Gallery Foundation, established in 2005 is an independent charity with tax deductible donation status. When you donate to The Gallery Foundation you are directly supporting the Grafton Regional Gallery, its infrastructure, collection, and especially its future. This enriches our community – that's something close to our hearts.

Your donation to The Gallery Foundation helps support the Gallery to deliver exciting exhibitions and educational events and to build the collection.

BECOME A PERMANENT PART OF ARTS AND CULTURE IN THE CLARENCE VALLEY.

With your support the Gallery can bring outstanding arts and creative experiences to our Valley for all to enjoy. By donating \$1,200 you will secure a once-in-a-lifetime opportunity to have your name and three inspirational words permanently on display in the grand staircase of the new extension to the Gallery. The funds raised by this project will provide ongoing support for resources and facilities that bring artists and culture to our region. Donations are tax deductible.



To be a part of this once-in-a-lifetime opportunity
contact gallery@clarence.nsw.gov.au

Let creativity inspire your imagination at
GRAFTON REGIONAL GALLERY



www.graftongallery.com.au



Grafton Regional Gallery
is supported by the NSW
Government through Create NSW